



Erre Pi is a family owned company founded in 1972.

Main prospective is the pursuit of a high quality in the work, together with a total cooperation with the customer, and oriented to the continuous improvement.

With an experience of 50 years in the sector, we deal with products related to different fields: lighting, automotive, truck, motorcycles, pneumatics, oleodynamics, electronics, food, textiles and more.

We can supply raw and also finished components with an of surface finishing in outsourcing:

- Pickling
- Polishing
- Zinc-coating
- Nickel plating
- Sandblasting
- Tumbling
- Chrome plating
- Quenching
- ...and more



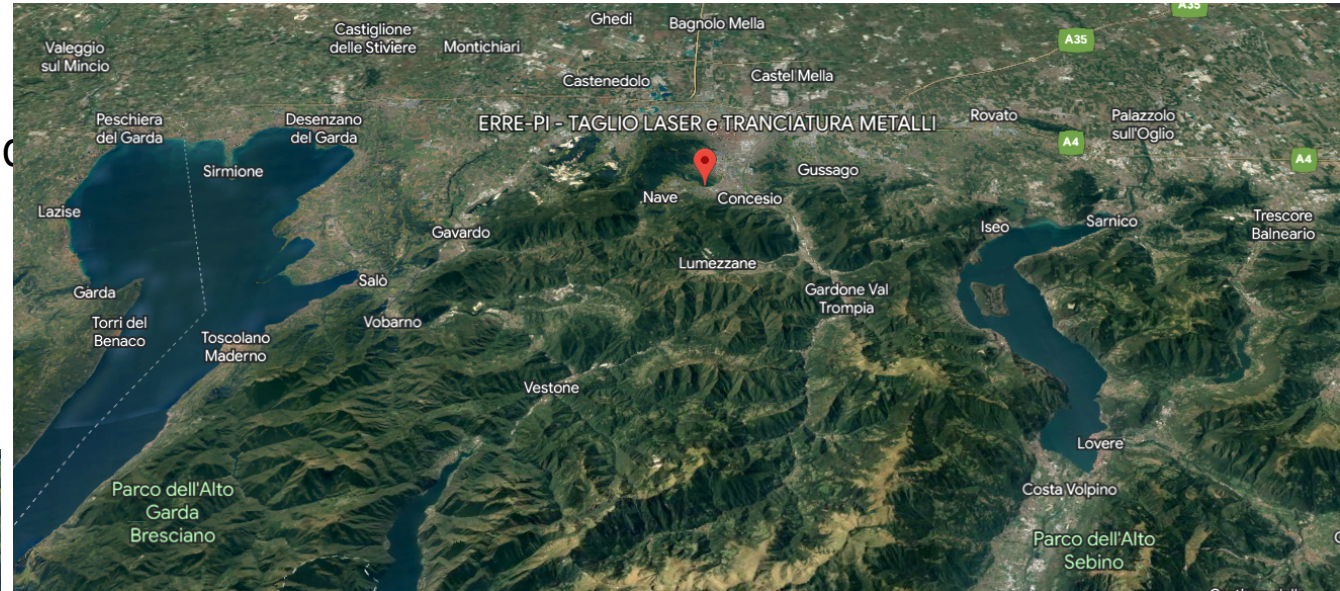
Erre-Pi belongs to the category of companies know as small business, and its strength are flexibility and direct cooperation with customers, that allow to provide a fast and accurate service.





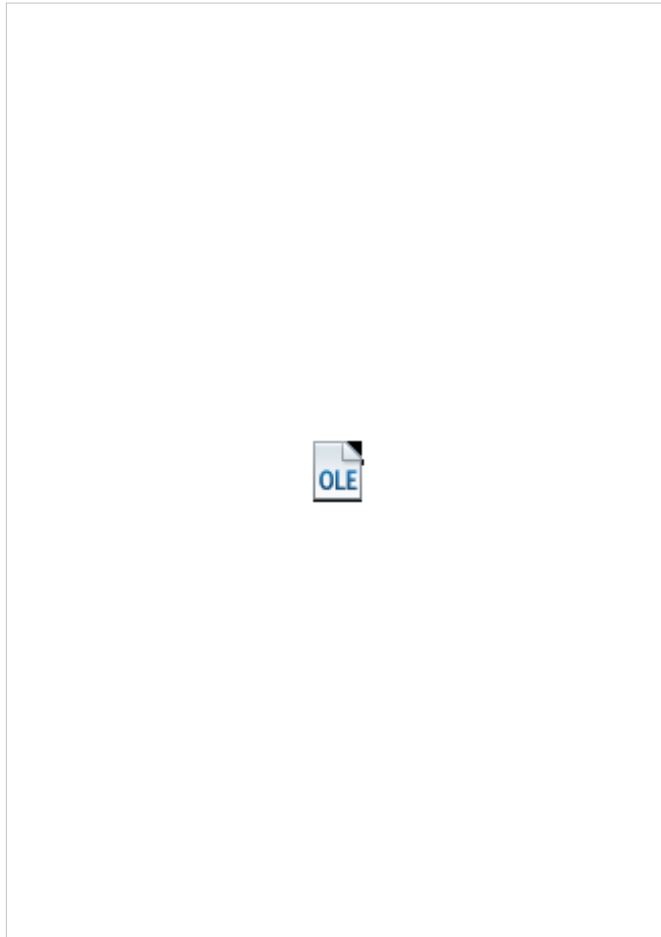
Location:

The headquarter and plant is located in Nave, Brescia (north of Italy) with a total covered area of 2000 m².

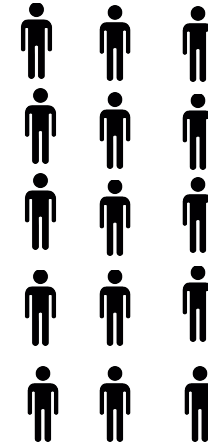


Certification:

ERRE PI is a certified company ISO 9001 ed.2015 released by IQNET



Human Resource:
ERREPI has 15 employees





We strive to make our customers' job easier and quicker by continuously raising the standards of flexibility, reliability, safety and value for money

Since ERRE PI foundation, we've been relying on 3 key pillars:



PEOPLE

The talent, the passion and the ideas of our people



RESEARCH

The continuous investments in new technologies



SAFETY

The ambition of improving the world we live in, by steadily raising the standards of safety and our know how

ERRE PI
WHAT CAN IT DO
FOR YOU?

LASER CUTTING

SHEARING

PRESSING
OF COLD
PLATE

PRECISION
METALLIC
DEFLECTIONS

ROBOTIZED
WELDING

WHAT RAW
MATERIAL DO
WE PROCESS?

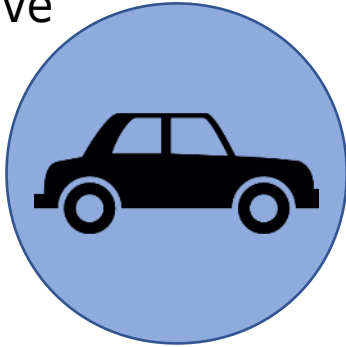
IRON
STEEL
BRASS
ALUMINIUM
COPPER

WE WORK
TICKNESS FROM
0,2 mm
TO 30 mm

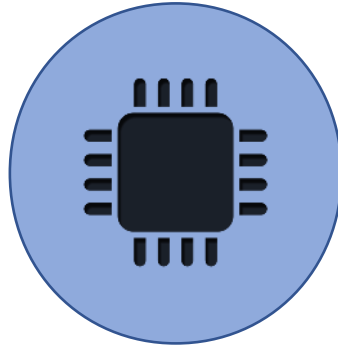


ERRE PI process is oriented to be a customer support through all the phases of the project life:
starting from customer request phase until the shipment.

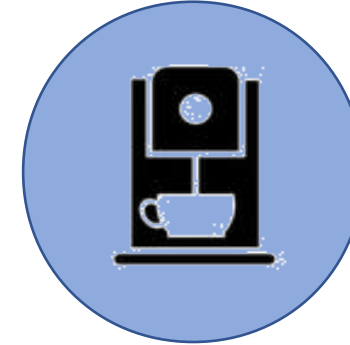
Automotive



Electronics

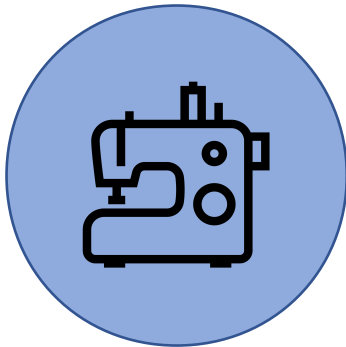


Truck

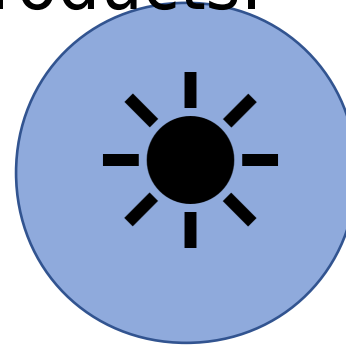
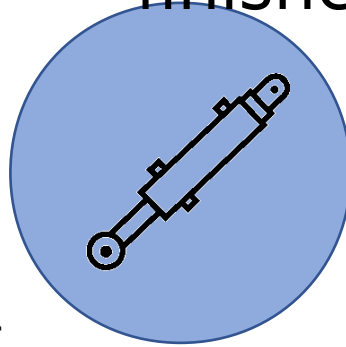


Food

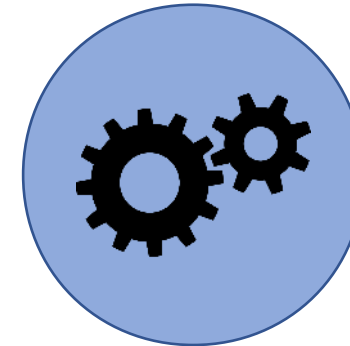
Textile



Oleodynamic



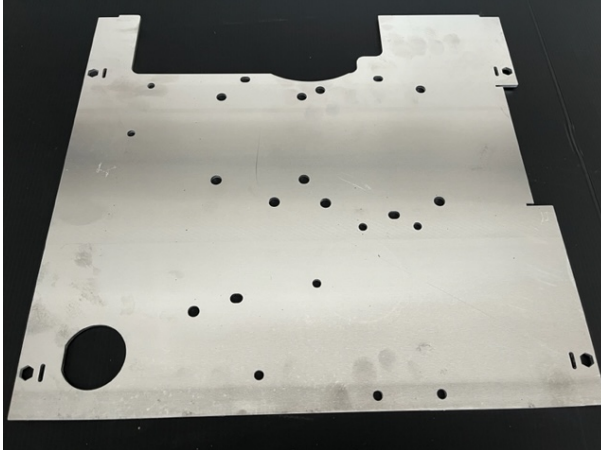
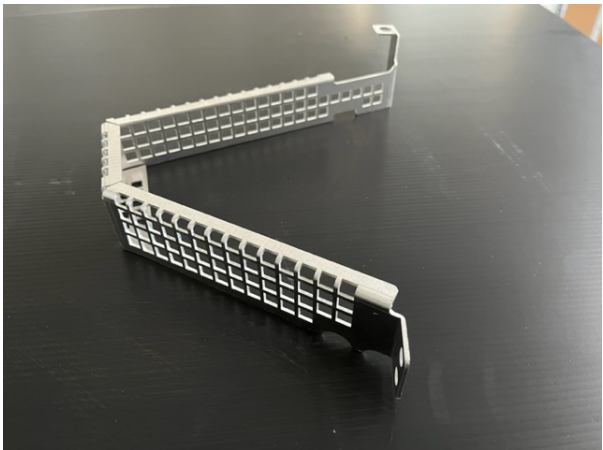
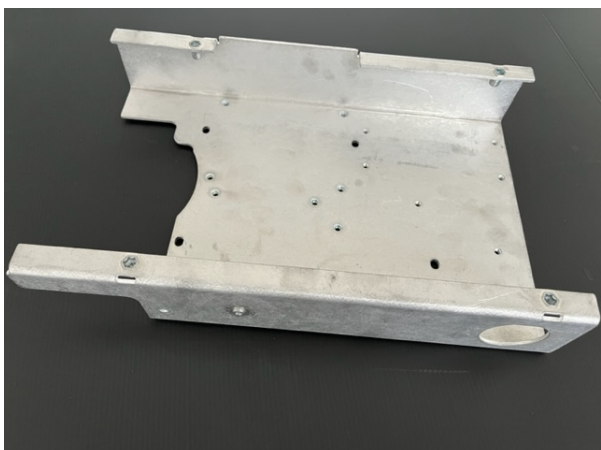
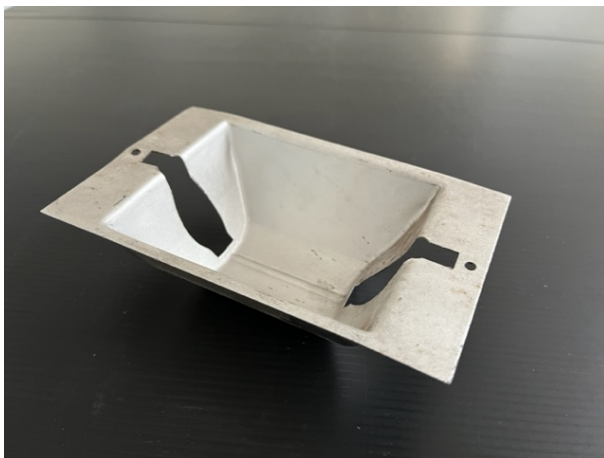
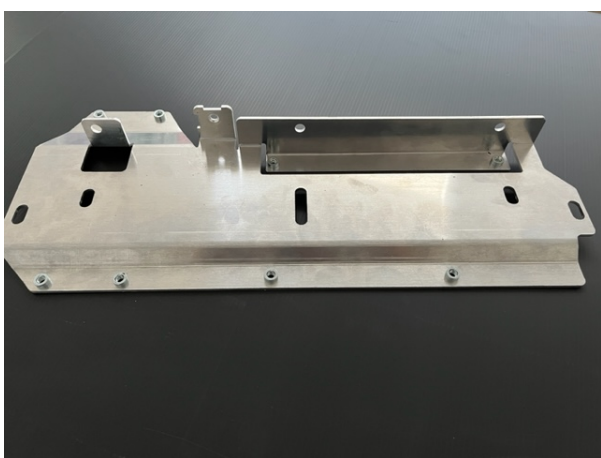
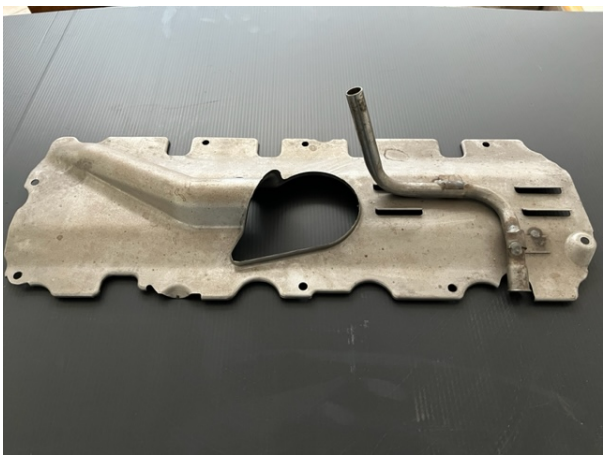
Solar



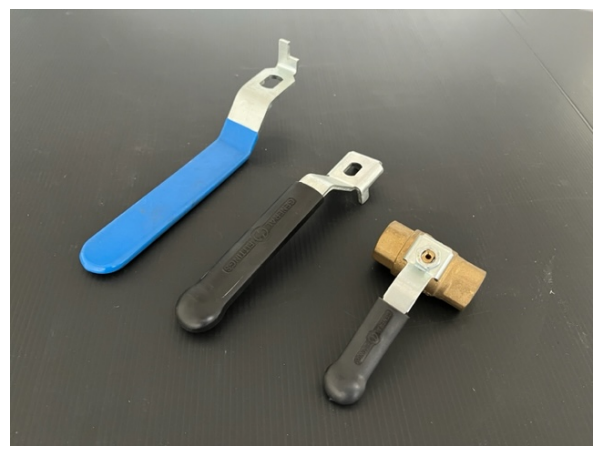
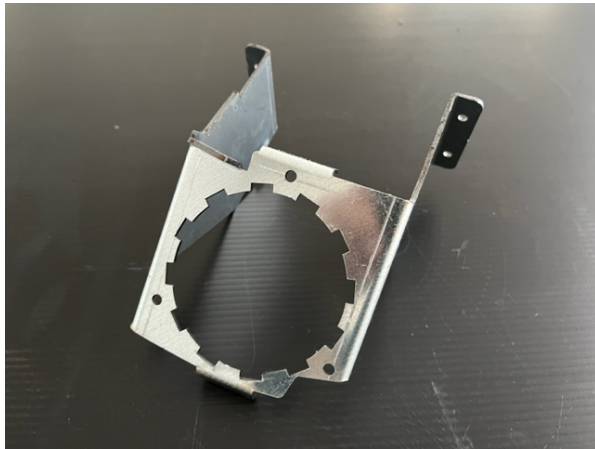
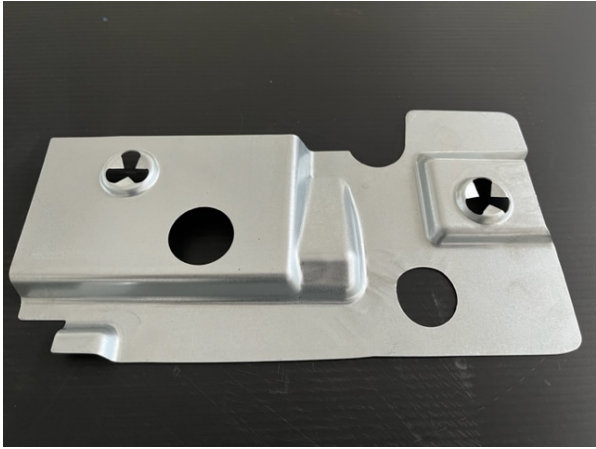
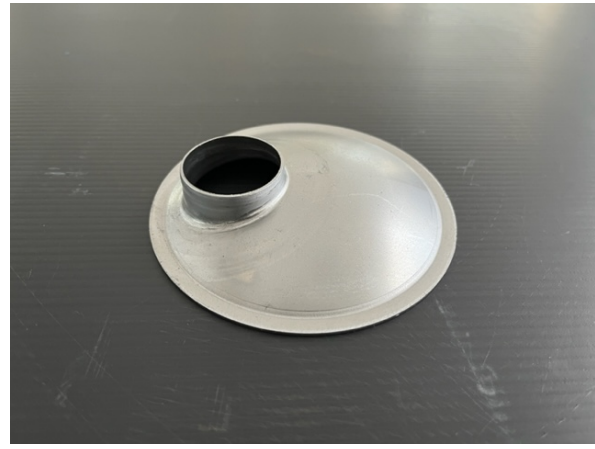
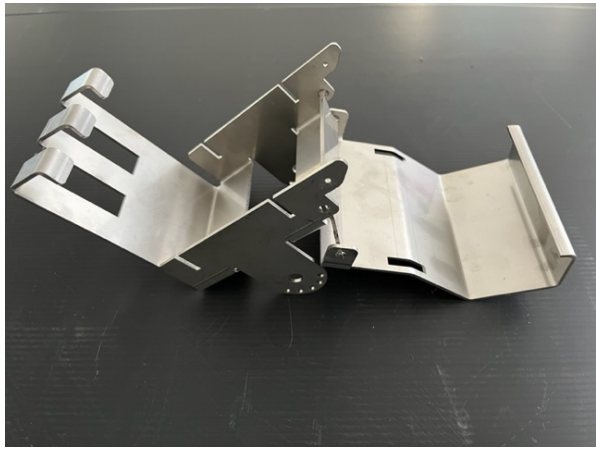
Gear motors

100% Specialized in different sectors and in providing raw parts as well as all kind of finished products.





Our production





ERRE PI looks to the future with new investments planned in 2022.

We are proud to inform all our customers that, within at the end of the 2023 :

- The production and offices areas will be increase of 700 square meters
- It will be installed a new state-of-the art cutting laser machine
- A new shearing machine of 200 Tons

Target → Dec 2023 →

